

Widdybank Mittens

by Audrey Koval

EXPERIENCE LEVEL
Advanced Beginner

The perfect combination of style & substance for brisk days. Whether worked up in bold colors or knit with a softer palette, these cute, polka dot mittens are a beautiful mix of traditional and modern color work motifs that make the perfect accessory to any winter outfit.



PURVEYOR OF FINE YARNS

107 W Main St,
St Charles, IL 60174
630.444.0480
woolandcompany.com



MATERIALS

1 ball each of five different colors of Rauma Tumi, Finullgarn, or comparable fingering weight yarn.

SAMPLE YARN COLOURS

Cover Sample: RAUMA TUMI

Color A: SFN50 Black

Color B: 1647 Light Blue

Color C: 1992 Storm Grey

Color D: SFN10 White

Color E: B126 Dusty Purple

Sample 2: RAUMA TUMI

Color A: SFN75 Dark Grey

Color B: 2187 Mist

Color C: 232 Burgundy

Color D: SFN38 Light Grey

Color E: 1244 Stormy Sea

NEEDLES

Size US 0 double point needles, or needle style of choice to work in round

Size US 1 double point needles, or needle style of choice to work in round

NOTIONS

Stitch marker

Waste yarn

Tapestry needle

GAUGE

32 sts x 20 rows = 4 inches in colorwork pattern on larger needles, blocked

FINISHED SIZE

8" mitten circumference at palm

Short Version: 7.25" from base of thumb to top of fingers

Long Version: 7.75" from base of thumb to top of fingers

TECHNIQUES

Knitting in the round

Stranded color work

Increases/ decreases

Mitten construction

PATTERN NOTES

The Widdybank Mittens are constructed by first knitting a ribbed cuff that will be folded inside the mitten for extra warmth and insulation. Then a colorwork cuff with a traditional star motif is worked, followed by the mitten palm and gusseted thumb. Finally, a rounded mitten top is worked to complement the polka dot pattern.

INSIDE CUFF & FOLD

Starting with color C & smaller needles, cast-on 60 stitches using the long tail cast-on.

Knit in 1 by 1 rib until work measures 3" from cast on edge.

Note: The colorwork cuff of the mitten will only be 2.5 inches. This means that, when folded inside, the ribbed cuff will go further up into the mitten than where the colorwork cuff ends. If you would not prefer this, then knit in 1 by 1 rib until the work measures 2.5 inches from the cast on edge.

Round 1: switching to color A, knit

Round 2: switching to larger needles, knit

Round 3: purl

Round 4: knit

Round 5: purl

LEFT MITTEN

Colorwork Cuff

Following colorwork chart 1.L, knit 23 rounds.

Note: the color D stitches in rounds 11 and 13 can be added afterward with duplicate stitch to avoid long floats and working with three colors at once.

Palm of Mitten and Thumb Gusset

Set up row:

Continuing with color A, K1, M1, pm, k6, M1, k12, M1, k11, M1, k12, M1, k12, M1, k6 (2 thumb stitches and 64 palm stitches)

Knit 23 rounds, following colorwork chart 3 for thumb stitches and colorwork chart 2.S (short) or 2.LO (long) for palm stitches.

Save Stitches for Thumb & Mitten Top
Place first 24 sts on waste yarn and continue working chart 2.S (2.LO) for the remainder of mitten palm, and repeating rounds 1-24 once more and then repeating rounds 1-5 (repeat rounds 1-24 once more and then repeat rounds 1-11). Using chart 4, work mitten top decreases. Once there are 20 sts remaining, divide sts evenly onto two needles and kitchener stitch the mitten closed.

Thumb

Pick up the 24 sts held on waste yarn and place on needles. Work chart 5.S (5.LO), making sure to work decreases starting on round 9 (15). Once there are 10 sts remaining, divide sts evenly onto two needles and kitchener stitch the thumb closed.

RIGHT MITTEN

Colorwork Cuff

Following colorwork chart 1.R, knit 23 rounds.

Note: the color D stitches in rounds 11 and 13 can be added afterward with duplicate stitch to avoid long floats and working with three colors at once.

Palm of Mitten and Thumb Gusset

Set up row:

Continuing with color A, k6, M1, k12, M1, k11, M1, k12, M1, k12, M1, k6, pm, M1, k1 (2 thumb stitches and 64 palm stitches)

Knit 23 rounds, following colorwork chart 3 for thumb stitches and colorwork chart 2.S (2.LO) for palm stitches.

Save Stitches for Thumb & Mitten Top

Place last 24 sts on waste yarn and continue working chart 2.S (short) or 2.LO (long) for the remainder of mitten palm, and repeating rounds 1-24 once more and then repeating rounds 1-5 (repeat rounds 1-24 once more and then repeat rounds 1-11). Using chart 4, work mitten top decreases. Once there are 20 sts remaining, divide sts evenly onto two needles and kitchener stitch the mitten closed.



Thumb

Pick up the 24 sts held on waste yarn and place on needles. Work chart 5.S (5.LO), making sure to work decreases starting on round 9 (15). Once there are 10 sts remaining, divide sts evenly onto two needles and kitchener stitch the thumb closed.

FINISHING

Weave in ends.

Block & enjoy!

Notes

yrds = yards

k = knit

p = purl

sts = stitches

pm = place marker

M1 = make 1

M1L = make 1 left

M1R = make 1 right

ssk = slip, slip, knit 2 together through back loop

k2tog = knit 2 together

K3tog = knit 3 together

Sk2psso = slip, knit 2 together, pass slip stitch over

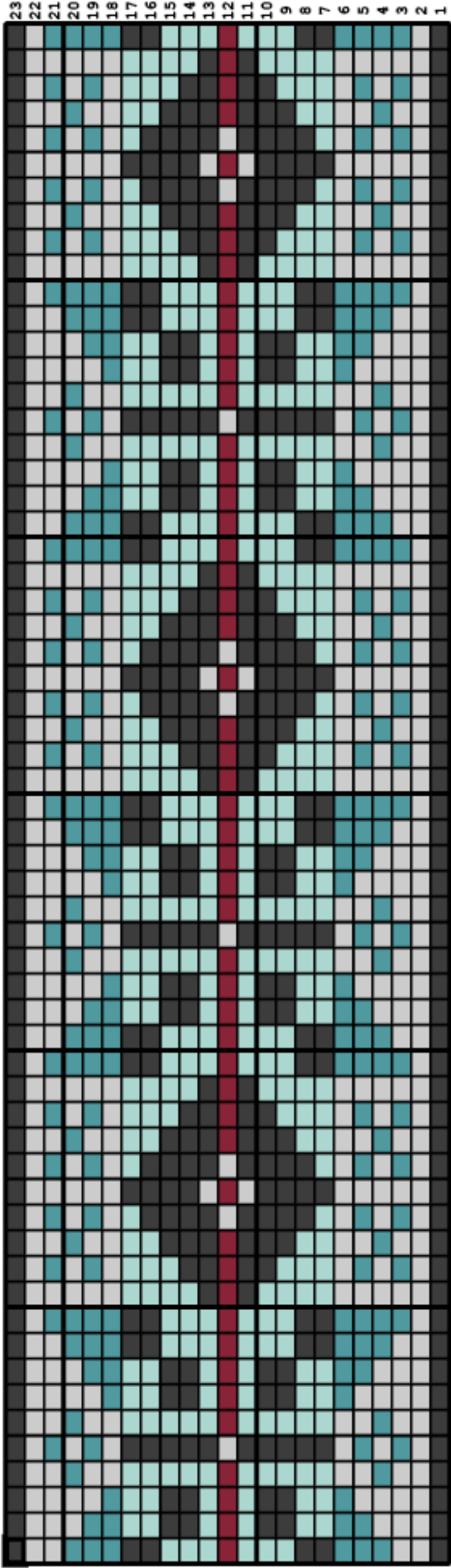


Sample 2

“Good things come in
small packages”

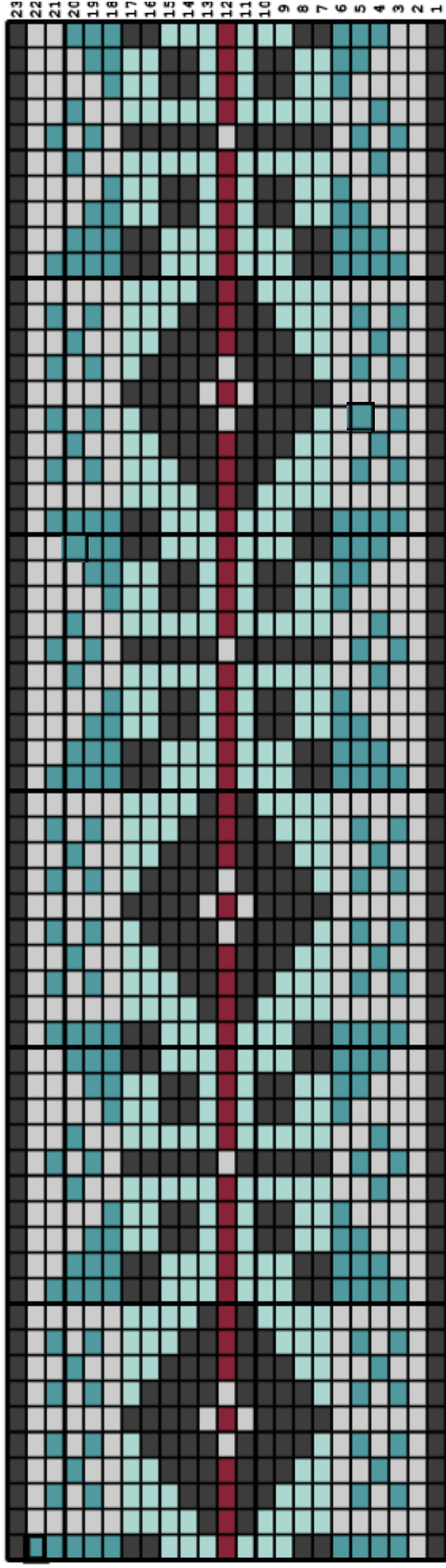


Chart 1.L



60 59 58 57 56 55 54 53 52 51 50 49 48 47 46 45 44 43 42 41 40 39 38 37 36 35 34 33 32 31 30 29 28 27 26 25 24 23 22 21 20 19 18 17 16 15 14 13 12 11 10 9 8 7 6 5 4 3 2 1

Chart 1.R



60 59 58 57 56 55 54 53 52 51 50 49 48 47 46 45 44 43 42 41 40 39 38 37 36 35 34 33 32 31 30 29 28 27 26 25 24 23 22 21 20 19 18 17 16 15 14 13 12 11 10 9 8 7 6 5 4 3 2 1



Chart 2.S

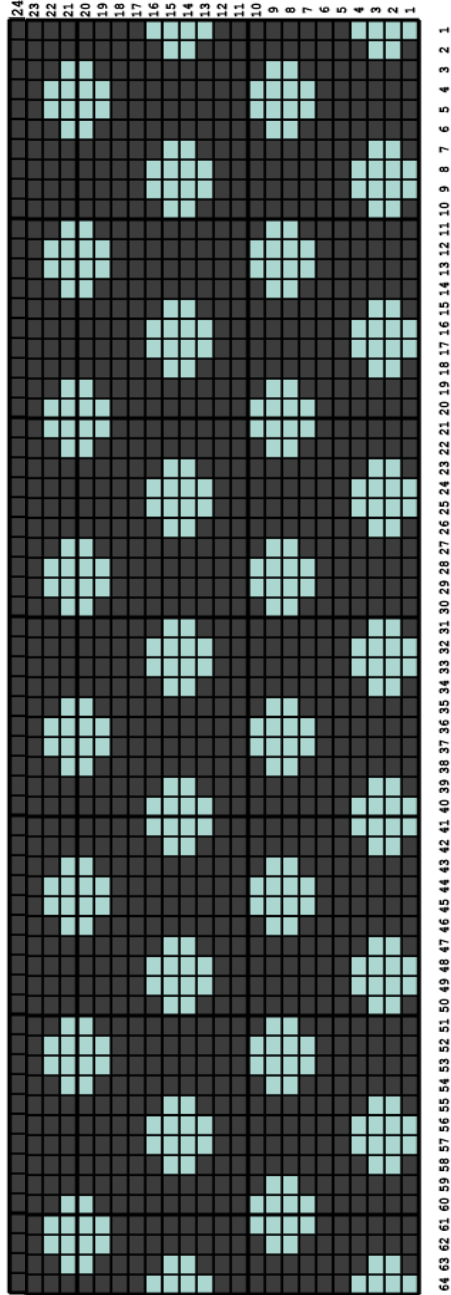


Chart 3

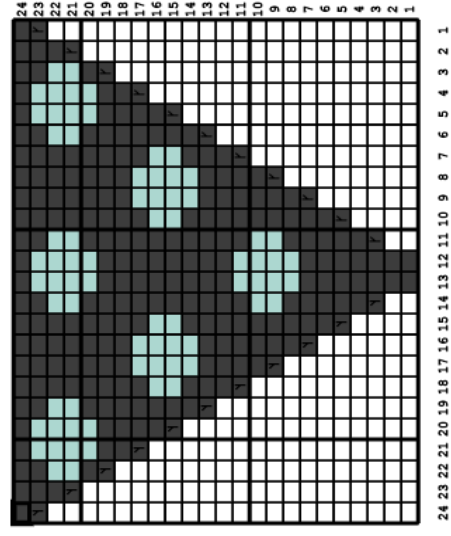


Chart 2.LO

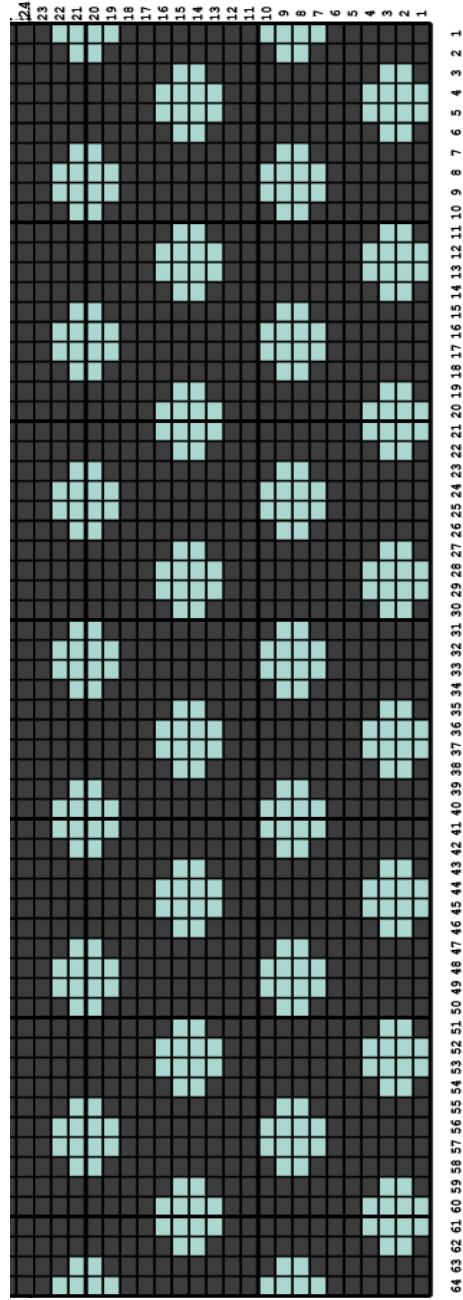


Chart 3

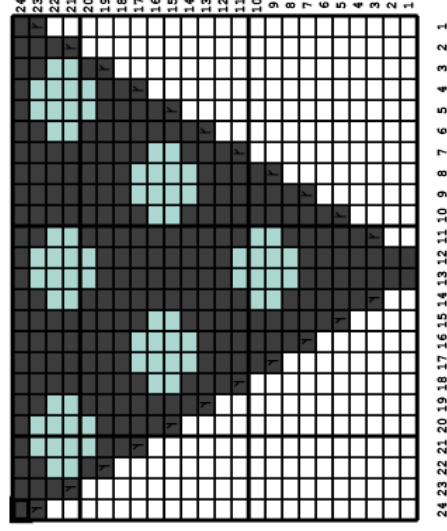
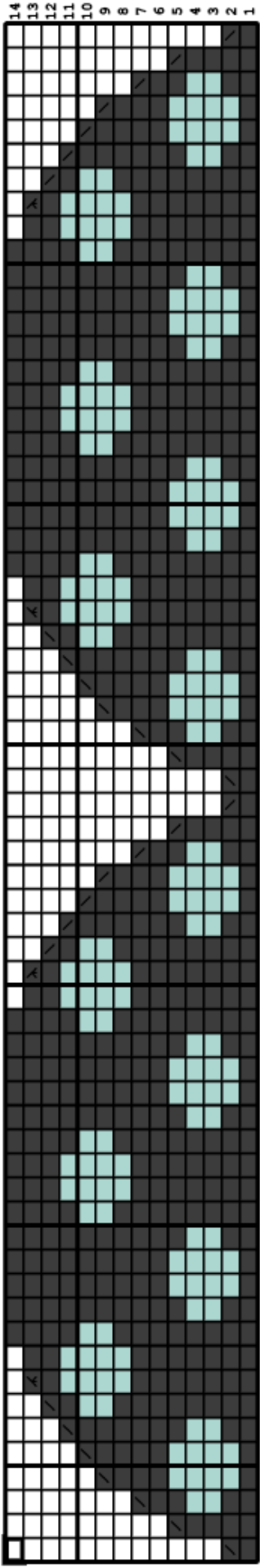
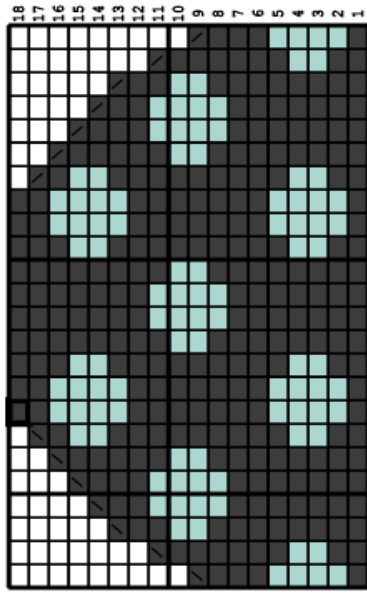


Chart 4



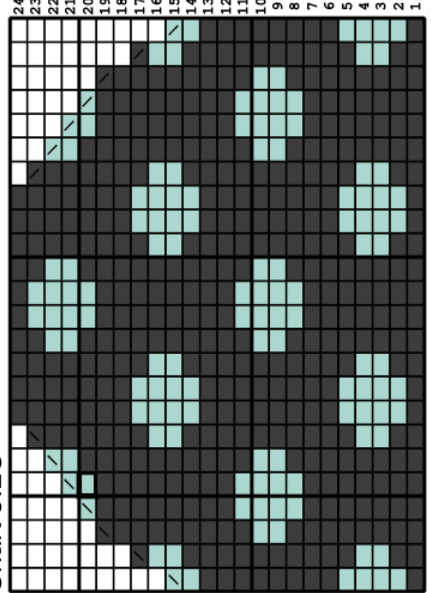
64 63 62 61 60 59 58 57 56 55 54 53 52 51 50 49 48 47 46 45 44 43 42 41 40 39 38 37 36 35 34 33 32 31 30 29 28 27 26 25 24 23 22 21 20 19 18 17 16 15 14 13 12 11 10 9 8 7 6 5 4 3 2 1

Chart 5.S



24 23 22 21 20 19 18 17 16 15 14 13 12 11 10 9 8 7 6 5 4 3 2 1

Chart 5.LO



24 23 22 21 20 19 18 17 16 15 14 13 12 11 10 9 8 7 6 5 4 3 2 1

Key

- | | | | |
|--|----------|--|---------|
| | knit | | color A |
| | M1L | | color B |
| | M1R | | color C |
| | ssk | | color D |
| | k2tog | | color E |
| | k3tog | | |
| | sk2pssso | | |

